

▲ Screenshot of GIS Extension map window with raster chart and SBP tracks

► Software Features

- map view with geographic layers and overlay of SES-2000 tracks, sediment probes, numerical probes and targets
- open SES-2000 data files from map window directly
- show side scan coverage and depth
- synchronized cursor and track between map window and interpretation window
- support for over 4,000 coordinate systems

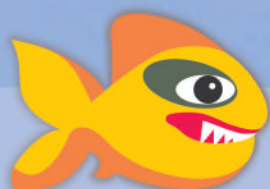
► Requirements

- license of ISE post-processing software for SES-2000 SBP and Side Scan systems
- existing ISE licenses are upgradable via internet and e-mail
- MS Windows XP/7/8 operating software
- dual monitor PC recommended

GIS Extension for ISE Processing Software

► Import/Export Formats

- import AutoCad DXF, DWG, ArcView SHP, OpenGIS KML, GML, MapInfo MIF, IHO S-57 and more than 30 other vector formats
- import GeoTiff, BMP, JPEG, PNG, DEM, GRD and several other image/grid formats
- export tracks in AutoCad DXF and OpenGIS KML formats plus map view in GeoTiff, BMP, JPEG, PNG image formats

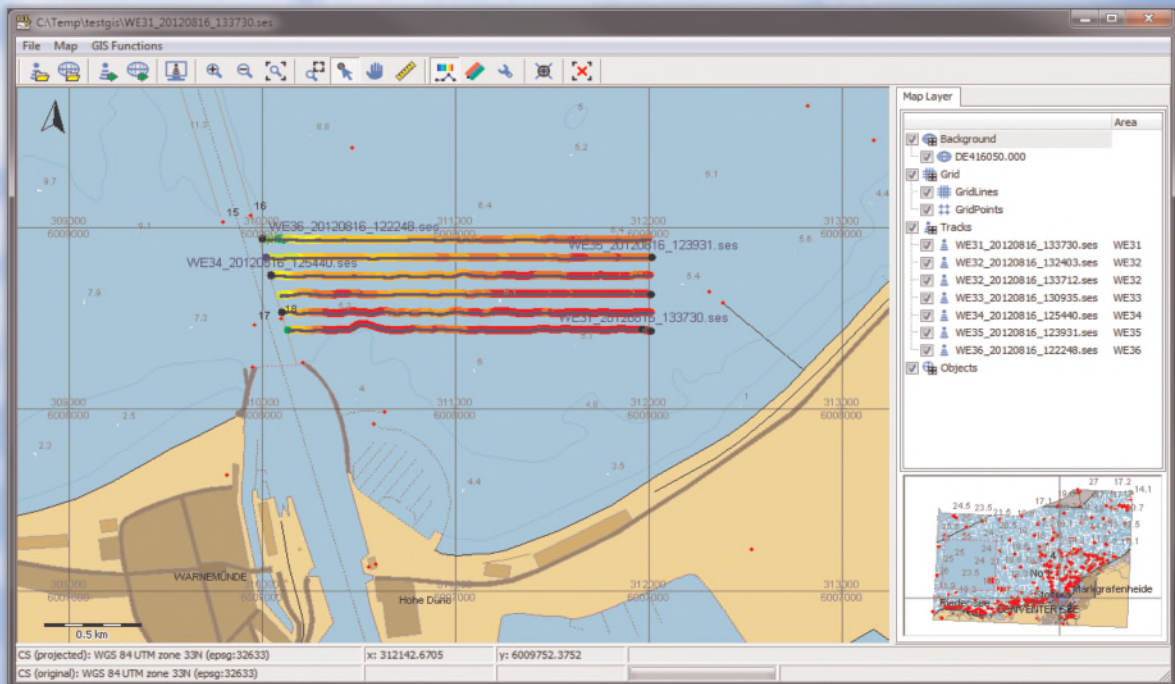


Innomar

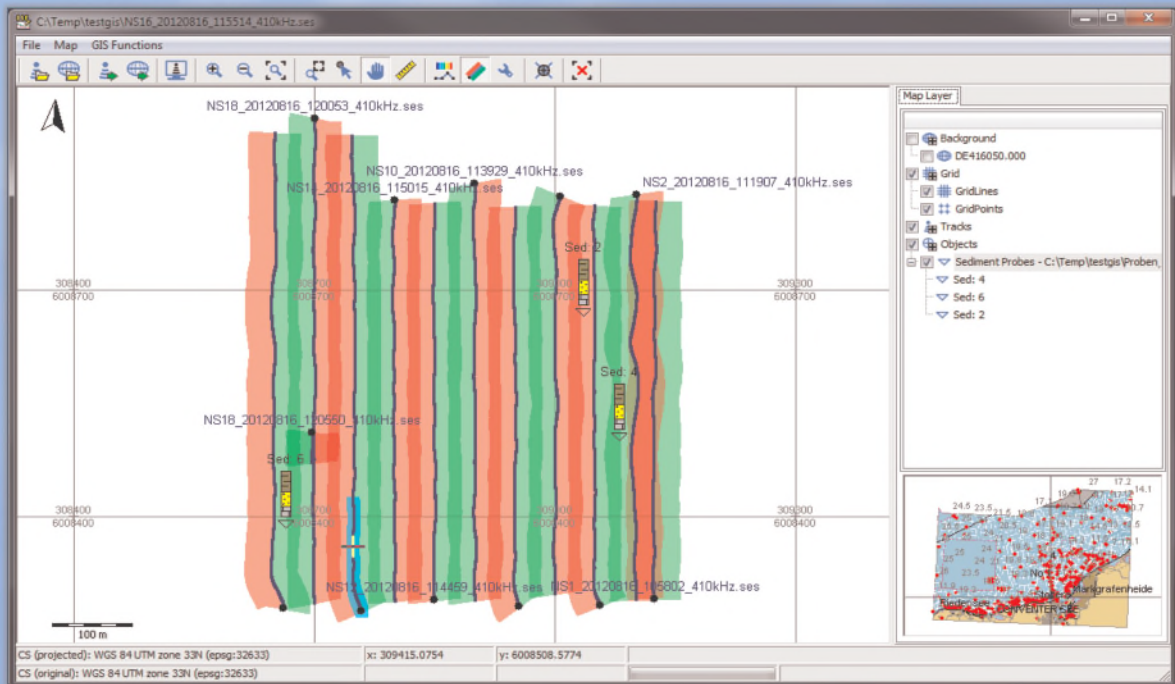


www.innomar.com

Example map windows of GIS Extension



Screenshot of GIS Extension map window with IHO S-57 chart, SBP tracks and depth data



Screenshot of GIS Extension map window with SSS coverage and overlay of sediment probe data