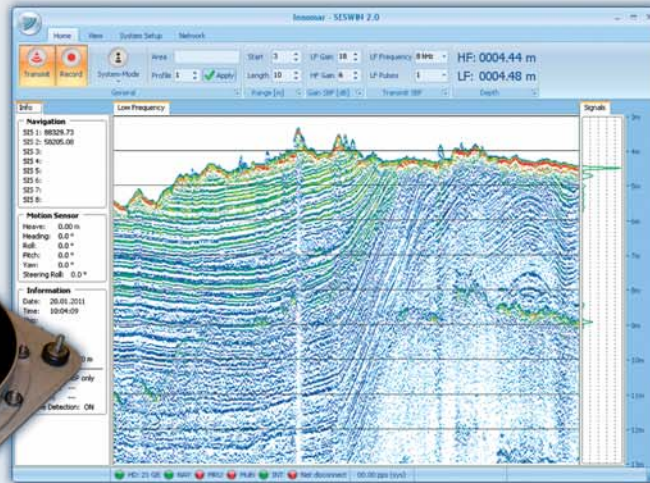




Transducer



Screenshot of the operating software

AUV electronic block



► **Performance**

- transducer depth rating 2,000 m
- range below transducer 1 – 400 m
- penetration: up to 40 m, depending on sediments
- layer resolution: up to 5 cm
- motion compensation: heave
- beam width @ 3 dB: $\pm 2^\circ$ / footprint < 7 % of altitude for all frequencies

► **Transmitter**

- primary frequencies: approx. 115 kHz (band 100 – 130 kHz)
- secondary low frequencies: 4, 5, 6, 8, 10, 12, 15 kHz (band 2 – 22 kHz)
- primary source level: > 238 dB// μ Pa re 1 m
- pulse width: 0.07 – 0.5 ms
- pulse rate: up to 40/s
- multi-ping mode
- pulse type: CW, Ricker

► **Acquisition**

- primary frequency (echo sounder, bottom track)
- secondary low frequency (sub-bottom data, multi-frequency mode)
- sample rate 70 kHz @ 24 bit

► **System Components**

- electronic block (D 0.25 m x L 0.40 m; 10 kg)
- transducer (D 0.47 m x H 0.06 m; 32 kg)

SES-2000 AUV

Parametric Sub-bottom Profiler

► **Software**

- SESWIN data acquisition software
- SES Convert SEG-Y/XTF data export
- SES NetView remote display
- ISE post-processing software

► **Power Supply Requirements**

- 24 V DC
- power consumption: < 150 W

